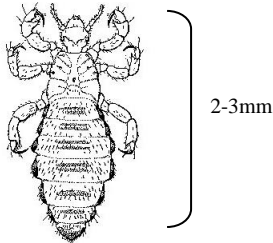


Dear Parents/Carers

Head lice has been detected in your child's class.

Whilst your child may not be affected, head lice are extremely contagious. To quickly resolve the problem, we are asking all parents to inspect their child's hair and scalp.

The following is taken from the Dept of Health's Head Lice Fact Sheet.



What are the signs of head lice?

The scalp may itch as the skin reacts to the saliva of the head lice. Itchiness can take weeks to develop. If you have had head lice more than once, the skin may become desensitised and there may be little or no itch.

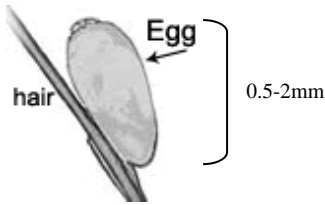
Crawling head lice may be seen in the hair, but they can move at 30 cm per minute and can be difficult to spot. Head lice can quickly run and hide from searching hands. Adult lice are usually dark brown and about 2 to 3 mm long. Hatchlings (young lice) are often a lighter brown and about 1 to 2 mm long. Eggs (nits) may be seen attached to the hair shaft but they may be very tiny and hard to see, especially newly-laid eggs close to the scalp. They are grey-white and about the size of a grain of salt.

How do I look for head lice?

Unless numerous head lice are visible, 'dry', head checks are unreliable, due to the speed at which head lice can move.

To check hair for head lice, carefully comb plenty of hair conditioner through the dry hair, then comb again in sections with a metal fine-tooth 'nit' comb. The hair conditioner slows the head lice down so they can be trapped in the comb. Wipe the combings on a white paper towel and examine them with a magnifying glass in strong light, e.g. sunlight, to look for head lice and eggs.

To check more effectively for eggs, use a magnifying glass in strong light, e.g. sunlight, to examine the hair close to the scalp, especially behind the ears and at the nape of the neck. **To check more effectively for eggs**, use a magnifying glass in strong light, e.g. sunlight, to examine the hair close to the scalp, especially behind the ears and at the nape of the neck.



The Dept of Health Fact Sheet on Head Lice is available from the school office or visit the HealthyWA website for further information at;

https://healthywa.wa.gov.au/Articles/F_I/Head-lice

Please complete and sign the slip provided below and return it to your child's class teacher tomorrow. Thank you for participating in the school's co-operative approach to head lice management.

Mark Donaldson
Principal

✂

Child's name.....

Yes I have checked my child's hair according to Dept of Health instructions.

- I found no head lice or eggs.
- I found some head lice and have commenced treatment.
- I found some head lice and would like further advice on how to treat them.

No I have not checked my child's hair because.....

.....

.....
Parent Signature

.....
Date